



Government of India
Ministry of Earth Sciences



India Meteorological Department

PRESS RELEASE-6

Time of issue: 1650 hours IST

Dated: 30th August, 2024

Sub: (a) Cyclonic Storm “ASNA” (pronounced as As-Na) over Kachchh coast and adjoining areas of Pakistan & Northeast Arabian Sea and (b) Well Marked Low Pressure Area over Westcentral & adjoining Northwest Bay of Bengal and

(a) Cyclonic Storm “ASNA” (pronounced as As-Na) over Kachchh coast and adjoining areas of Pakistan & Northeast Arabian Sea and (b) Well Marked Low Pressure Area over Westcentral & adjoining Northwest Bay of Bengal.

Yesterday’s Deep Depression over Saurashtra & Kachchh moved westwards and intensified into a **Cyclonic Storm “ASNA” (pronounced as As-Na)** in the morning (1130 hours IST) of 30th August, 2024 over the same region near latitude 23.5°N and longitude 67.9°E, 190 km west-northwest of Bhuj (Gujarat), 100 km west-northwest of Naliya (Gujarat) and 170 km southeast of Karachi (Pakistan).

It is likely to continue to move nearly west-northwestwards over northeast Arabian Sea away from Indian coast during subsequent 2 days.

Forecast track and intensity are given in the following table:

Date/Time(IST)	Position (Lat. °N/ long. °E)	Maximum sustained surface wind speed (Kmph)	Category of cyclonic disturbance
30.08.24/1130	23.5/67.9	60-70 gusting to 80	Cyclonic Storm
30.08.24/1730	23.5/67.5	65-75 gusting to 85	Cyclonic Storm
30.08.24/2330	23.6/66.8	70-80 gusting to 90	Cyclonic Storm
31.08.24/0530	23.7/65.9	70-80 gusting to 90	Cyclonic Storm
31.08.24/1130	23.7/65.9	70-80 gusting to 90	Cyclonic Storm
31.08.24/2330	23.9/64.3	65-75 gusting to 85	Cyclonic Storm
01.09.24/1130	23.8/62.4	60-70 gusting to 80	Cyclonic Storm
01.09.24/2330	23.4/61.1	50-60 gusting to 70	Deep Depression
02.09.24/1130	22.5/59.9	40-50 gusting to 60	Depression

Warnings:

(i) Rainfall Warning:

Gujarat State:

Saurashtra & Kachchh: Light to moderate rainfall at most places **heavy to very heavy rainfall** at isolated places over Kachchh and adjoining districts of Saurashtra on 30th August.

Contact: Cyclone Warning Division, Office of the Director General of Meteorology, India Meteorological Department, Ministry of Earth Sciences, E-mail: cyclonewarningdivision@gmail.com, Website: rsmcnewdelhi.imd.gov.in, Spatial rainfall distribution: Isolated: <25%, A few: 26-50%, Many: 51-75%, Most: 76-100%, Rainfall amount (mm): Heavy rain: 64.5 – 115.5, Very heavy rain: 115.6 – 204.4, Extremely heavy rain: 204.5 or more.

(ii) Wind warning:

- Squally wind speed reaching 45-55 kmph gusting to 65 kmph is likely over the interior districts of South Gujarat Region and Saurashtra & Kutch on the 30th August.
- Squally wind speed reaching 60-70 kmph gusting to 80 kmph is prevailing along & off Gujarat coasts & adjoining Pakistan coasts and over northeast & adjoining eastcentral Arabian Sea. It is likely to increase becoming 70-80 kmph gusting to 90 kmph over northeast & adjoining eastcentral Arabian Sea from night of 30th August till 1st September morning and decrease gradually thereafter.
- Gale wind speed reaching 65-75 kmph gusting to 85 kmph is likely to prevail over northwest and adjoining westcentral Arabian Sea off Pakistan and southeast Iran coasts from morning of 31st August till 1st September, morning. Thereafter, the winds would gradually decrease gradually becoming squally wind speed reaching 50-60 kmph gusting to 70 kmph by evening of 1st September and 40-50 kmph gusting to 60 kmph by morning of 2nd September.
- Strong wind speed reaching 40-50 kmph gusting to 60 kmph is likely to prevail along and off north Maharashtra coasts during 30th to 31st August.

(iii) Sea condition:

- Squally weather with Rough to very Rough sea conditions is very likely to prevail along & off Gujarat & adjoining north Maharashtra Coasts till 31st August.
- Very rough to high sea condition is likely to prevail over northeast & adjoining eastcentral and Arabian Sea off Gujarat coast and along & off Pakistan coasts during 30th August to 1st September.
- Very rough to high Sea condition is likely to prevail over northwest and adjoining westcentral Arabian Sea off Pakistan and southeast Iran coasts from 31st August till 2nd September.

(iv) Fishermen warning:

Fishermen are advised not venture into

- Northeast & adjoining Eastcentral Arabian Sea and along & off Gujarat & adjoining north Maharashtra Coasts till 31st August.
- Northeast & adjoining eastcentral Arabian Sea off Gujarat coast and along & off Pakistan coasts during 30th August to 1st September.
- Northwest & adjoining westcentral Arabian Sea and along & off Pakistan and southeast Iran coasts from 31st August till 2nd September.

(v) Advisory for offshore/onshore Exploration and Production (E & P) Operators:

- The small ships and offshore -onshore E & P operators, shipping and port authorities along & off Gujarat & north Maharashtra Coasts and Northeast & adjoining Eastcentral Arabian Sea are advised to keep watch on developing weather and take necessary actions on 30th August.

Contact: Cyclone Warning Division, Office of the Director General of Meteorology, India
Meteorological Department, Ministry of Earth Sciences, E-mail: cyclonewarningdivision@gmail.com,
Website: rsmcnewdelhi.imd.gov.in, **Spatial rainfall distribution:** Isolated: <25%, A few: 26-50%, Many: 51-75%, Most: 76-100%, **Rainfall amount (mm):** Heavy rain: 64.5 – 115.5, Very heavy rain: 115.6 – 204.4, Extremely heavy rain: 204.5 or more.

b) Well Marked Low Pressure Area over Westcentral & adjoining Northwest Bay of Bengal.

Yesterday's low pressure area over central and adjoining north Bay of Bengal lay as well marked low pressure area over westcentral & adjoining northwest Bay of Bengal off north Andhra Pradesh & South Odisha coasts in the morning (1130 hours IST) of 30th August, 2024.

It is likely to move further west-northwestwards towards north Andhra Pradesh and adjoining south Odisha coasts, intensify into a depression over westcentral and adjoining northwest Bay of Bengal during next 36 hours.

Warnings:

(i) Rainfall Warning:

Odisha: Light to moderate rainfall at most places with heavy to very heavy rainfall at isolated places during 30th to 31st August. Light to moderate rainfall at most places with isolated heavy rainfall likely on 1st September.

Coastal Andhra Pradesh: Light to moderate rainfall at most places with heavy rainfall at isolated places during 30th August to 1st September and heavy to very heavy rainfall at isolated places on 30th and 31st August.

(ii) Wind warning:

- Squally weather with wind speed reaching 30-40 kmph gusting to 50 kmph is likely to prevail over Westcentral and adjoining Northwest Bay of Bengal on 30th becoming 45-55 kmph gusting to 65 kmph on 31st August.
- Squally wind speed reaching 45-55 kmph gusting to 65 kmph is likely to prevail along & off North Andhra Pradesh & south Odisha coasts on 31st August.

(iii) Sea condition:

- Rough sea condition is very likely to prevail over Westcentral and adjoining Northwest Bay of Bengal till 31st August.
- Rough sea condition is very likely to prevail along & off North Andhra Pradesh & south Odisha coasts on 31 August.

(iv) Fishermen warning:

Fishermen are advised not venture into

- Westcentral & adjoining northwest Bay of Bengal till 31st August and along & off south Odisha and north Andhra Pradesh Coasts on 31st August.

(v) Advisory for offshore/onshore Exploration and Production (E & P) Operators:

- The small ships and offshore -onshore E & P operators, shipping and port authorities along & off north Andhra Pradesh & south Odisha coasts and westcentral and adjoining northwest Bay of Bengal are advised to keep watch on developing weather and take necessary actions on 30th August.

Contact: Cyclone Warning Division, Office of the Director General of Meteorology, India Meteorological Department, Ministry of Earth Sciences, E-mail: cyclonewarningdivision@gmail.com, Website: rsmcnewdelhi.imd.gov.in, Spatial rainfall distribution: Isolated: <25%, A few: 26-50%, Many: 51-75%, Most: 76-100%, Rainfall amount (mm): Heavy rain: 64.5 – 115.5, Very heavy rain: 115.6 – 204.4, Extremely heavy rain: 204.5 or more.

❖ **Impact Expected**

- Localized Flooding of roads, water logging in low lying areas and closure of underpasses mainly in urban areas of the above region.
- Occasional reduction in visibility due to heavy rainfall.
 - Reduction of visibility over sea area due to sea spray induced by strong wind and heavy rainfall.
- Disruption of traffic in major cities due to water logging in roads leading to increased travel time.
- Minor damage to kutcha roads.
- Possibilities of damage to vulnerable structure.
- Localized Landslides/Mudslides/landslips/mud slips/land sinks/mud sinks.
- Damage to horticulture and standing crops in some areas due to inundation.
- It may lead to riverine flooding in some river catchments (for riverine flooding please visit Web page of CWC)

❖ **Action Suggested**

Fishermen are advised not venture into

- Northeast & adjoining Eastcentral Arabian Sea and along & off Gujarat & adjoining north Maharashtra Coasts till 31st August.
- Northeast & adjoining eastcentral Arabian Sea off Gujarat coast and along & off Pakistan coasts during 30th August to 1st September.
- Northwest & adjoining westcentral Arabian Sea and along & off Pakistan and southeast Iran coasts from 31st August till 2nd September.
- Westcentral & adjoining northwest Bay of Bengal till 31st August and along & off south Odisha and north Andhra Pradesh Coasts on 31st August.
- Judicious regulation of offshore/onshore Operations
- Judicious regulation of surface transports including railways and roadways.
- Check for traffic congestion on your route before leaving for your destination.
- Follow any traffic advisories that are issued in this regard.
- Avoid going to areas that face the water logging problems often.
- Avoid staying in vulnerable structure.

❖ **Agromet Advisories for Heavy Rainfall** likely over Gujarat, Odisha and Andhra Pradesh due to both systems

- Make provision for draining out excess water from crop fields to avoid water stagnation in Gujarat State, Odisha and Andhra Pradesh.
- Provide mechanical support to horticultural crops and staking to vegetables

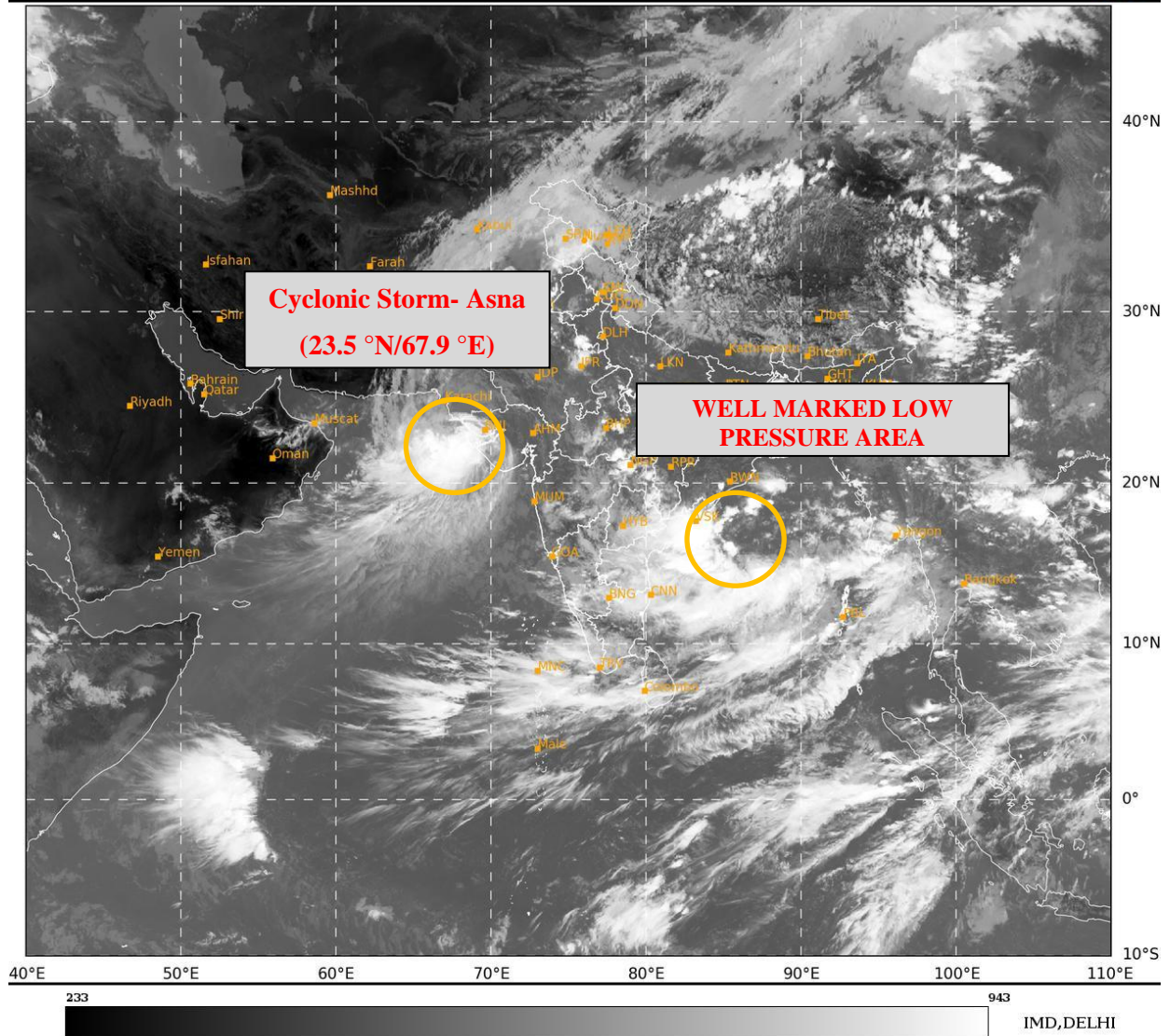
All associated graphics have been kept in Annexure-1. The 24 hours accumulated realised rainfall (≥ 7 cm) ending at 0830 hours IST of 29th August is kept in Annexure-2.

Next Press Release will be issued at 1330 hours IST of tomorrow, the 30th August, 2024.

Contact: Cyclone Warning Division, Office of the Director General of Meteorology, India
Meteorological Department, Ministry of Earth Sciences, E-mail: cyclonewarningdivision@gmail.com,
Website: rsmcnewdelhi.imd.gov.in, **Spatial rainfall distribution:** Isolated: <25%, A few: 26-50%, Many: 51-75%, Most: 76-100%, **Rainfall amount (mm):** Heavy rain: 64.5 – 115.5, Very heavy rain: 115.6 – 204.4, Extremely heavy rain: 204.5 or more.

SAT : INSAT-3DR IMG
IMG_TIR1 10.8 um
LIC Mercator

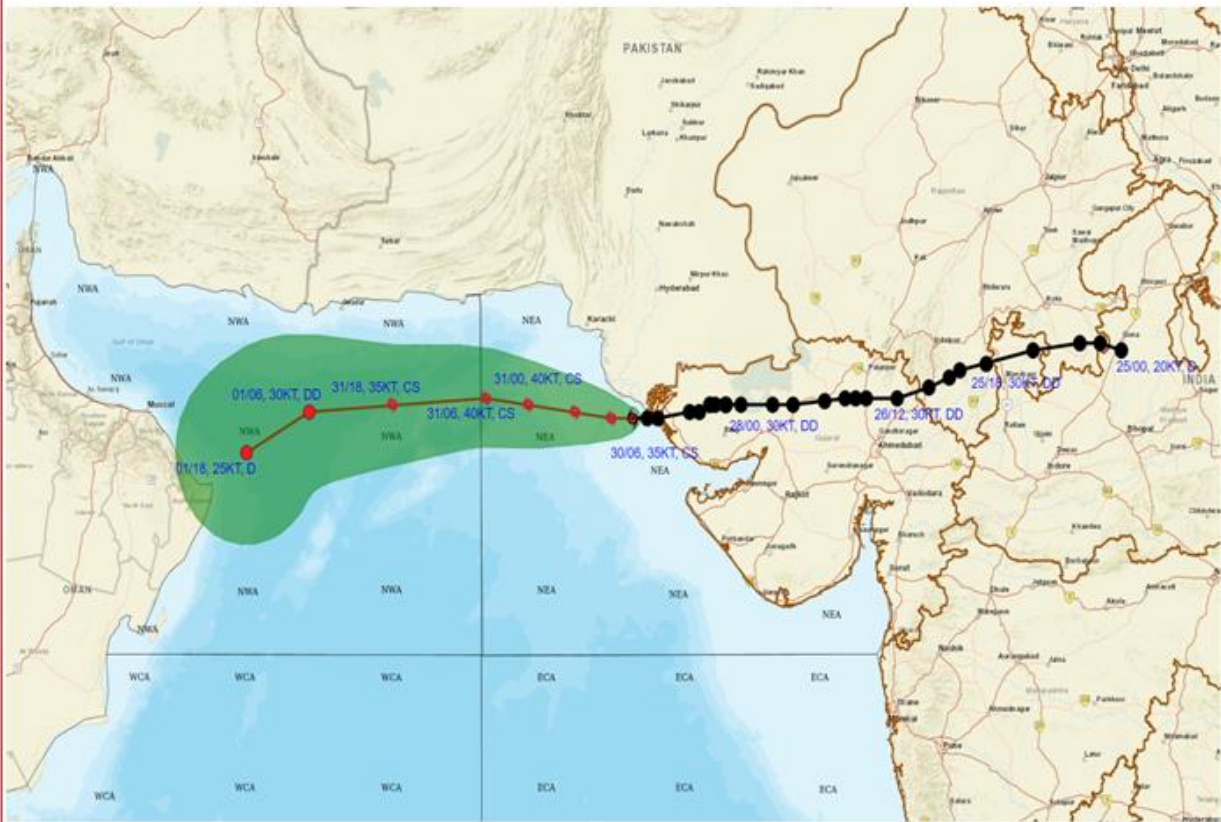
30-08-2024/(0715 to 0742) GMT
30-08-2024/(1245 to 1312) IST



Contact: Cyclone Warning Division, Office of the Director General of Meteorology, India
Meteorological Department, Ministry of Earth Sciences, E-mail: cyclonewarningdivision@gmail.com,
Website: rsmcnewdelhi.imd.gov.in, Spatial rainfall distribution: Isolated: <25%, A few: 26-50%, Many:
51-75%, Most: 76-100%, Rainfall amount (mm): Heavy rain: 64.5 – 115.5, Very heavy rain: 115.6 –
204.4, Extremely heavy rain: 204.5 or more.



OBSERVED AND FORECAST TRACK OF CYCLONIC STORM ASNA OVER KACHCHH COAST AND ADJOINING AREAS OF PAKISTAN & NORTHEAST ARABIAN SEA BASED ON 0600 UTC (1130 IST) OF 30TH AUGUST, 2024.



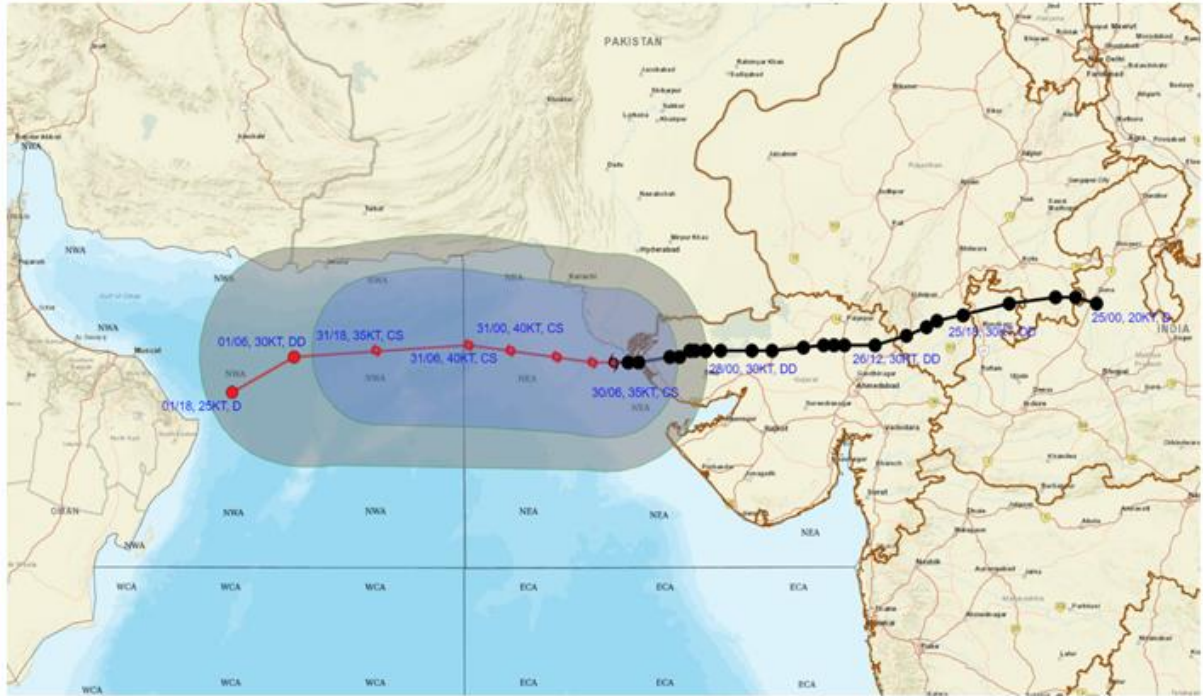
DATE/TIME IN UTC
 IST=UTC + 0530
 L: LOW PRESSURE AREA
 WML: WELL MARKED LOW PRESSURE AREA
 D: DEPRESSION (17-27 KT)
 DD: DEEP DEPRESSION (28-33 KT)
 CS: CYCLONIC STORM (34-47 KT)
 SCS: SEVERE CYCLONIC STORM (48-63KT)
 VSCS: VERY SEVERE CYCLONIC STORM (64-89 KT)
 ESCS: EXTREMELY SEVERE CYCLONIC STORM (90-119 KT)
 SuCS: SUPER CYCLONIC STORM (≥ 120 KT)

● LESS THAN 34 KT
 ○ 34-47 KT
 ○ ≥ 48 KT
 — OBSERVED TRACK
 — FORECAST TRACK
 ● CONE OF UNCERTAINTY

Contact: Cyclone Warning Division, Office of the Director General of Meteorology, India
 Meteorological Department, Ministry of Earth Sciences, E-mail: cyclonewarningdivision@gmail.com,
 Website: rsmcnewdelhi.imd.gov.in, Spatial rainfall distribution: Isolated: <25%, A few: 26-50%, Many:
 51-75%, Most: 76-100%, Rainfall amount (mm): Heavy rain: 64.5 – 115.5, Very heavy rain: 115.6 –
 204.4, Extremely heavy rain: 204.5 or more.



OBSERVED AND FORECAST TRACK ALONGWITH QUADRANT WIND DISTRIBUTION OF CYCLONIC STORM ASNA OVER KACHCHH COAST AND ADJOINING AREAS OF PAKISTAN & NORTHEAST ARABIAN SEA BASED ON 0600 UTC (1130 IST) OF 30TH AUGUST, 2024



DATE/TIME IN UTC

IST=UTC + 0530

L: LOW PRESSURE AREA

WML: WELL MARKED LOW PRESSURE AREA

D: DEPRESSION (17-27 KT)

DD: DEEP DEPRESSION (28-33 KT)

CS: CYCLONIC STORM (34-47 KT)

SCS: SEVERE CYCLONIC STORM (48-63KT)

VSCS: VERY SEVERE CYCLONIC STORM (64-89 KT)

ESCS: EXTREMELY SEVERE CYCLONIC STORM (90-119 KT)

SuCS: SUPER CYCLONIC STORM (≥ 120 KT)

● LESS THAN 34 KT

○ 34-47 KT

● ≥ 48 KT

— OBSERVED TRACK

- - - FORECAST TRACK

▲ CONE OF UNCERTAINTY

AREA OF MAXIMUM SUSTAINED WIND SPEED:

■ 28-33 KT (52-61 KMPH)

■ 34-49 KT (62-91 KMPH)

■ 50-63 KT (92-117 KMPH)

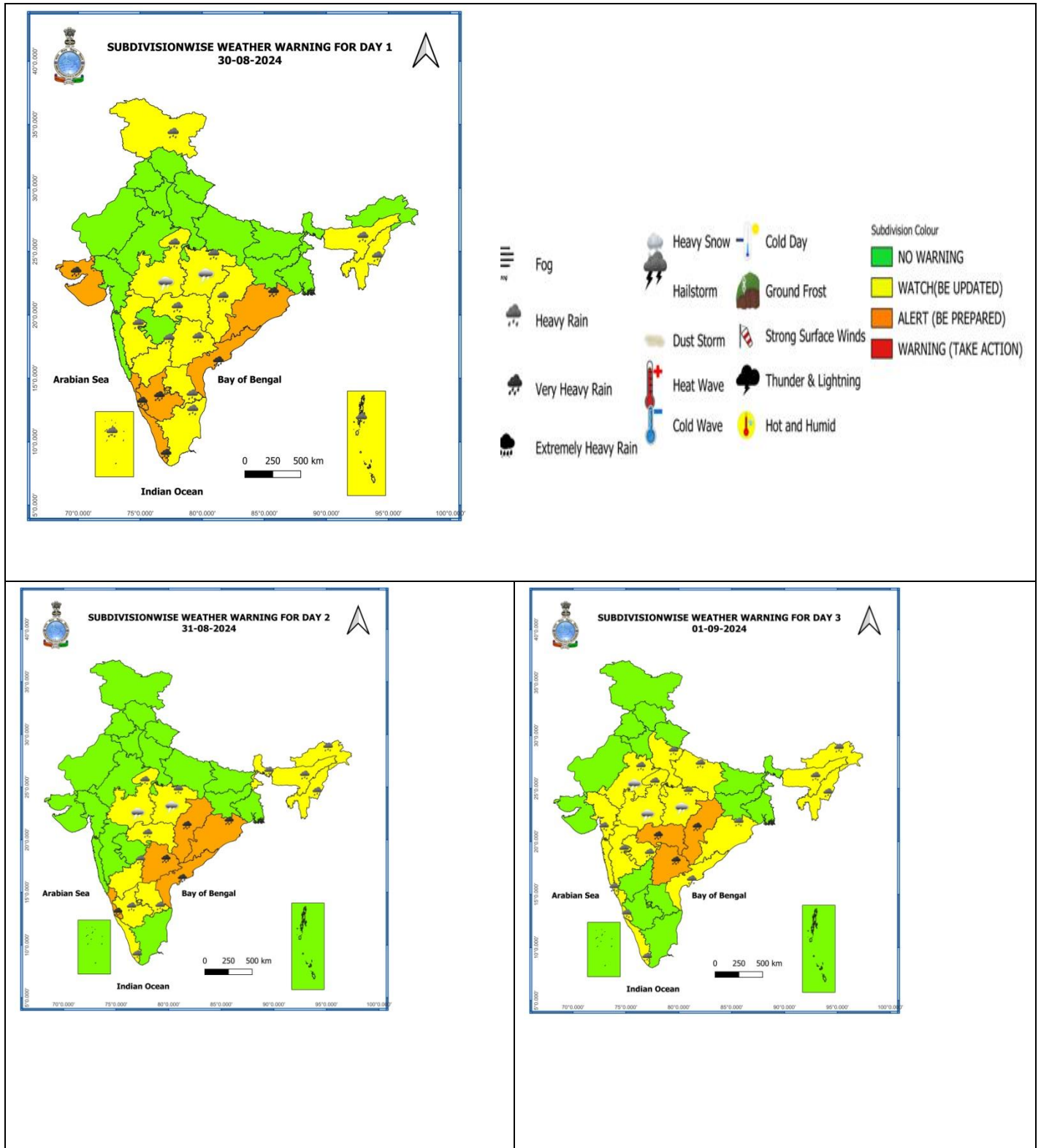
■ ≥ 64 KT (≥118 KMPH)

IMPACT OVER THE SEA

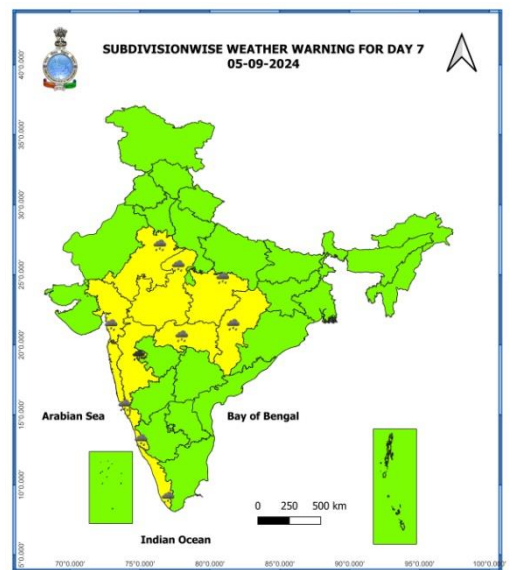
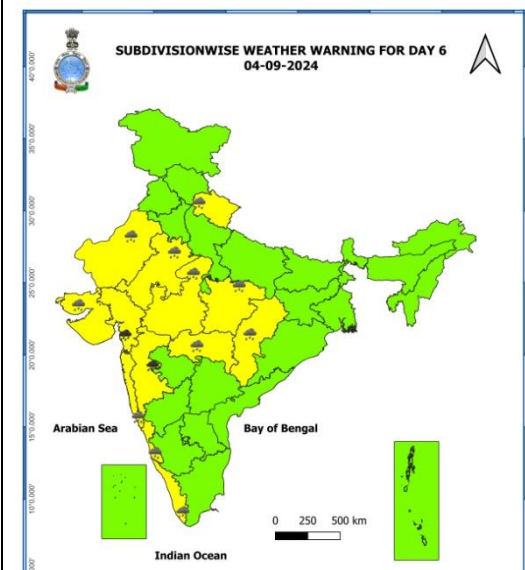
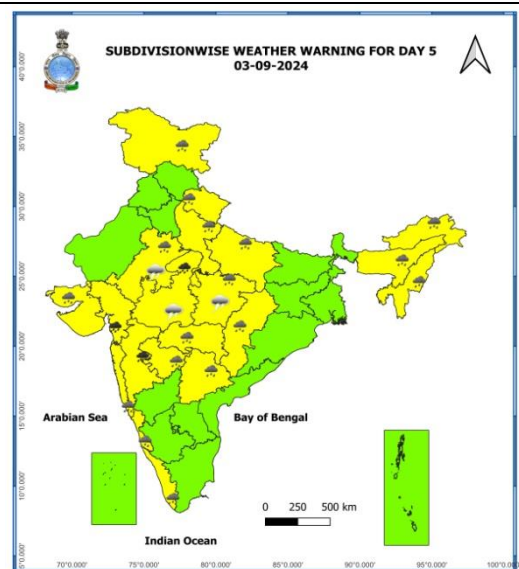
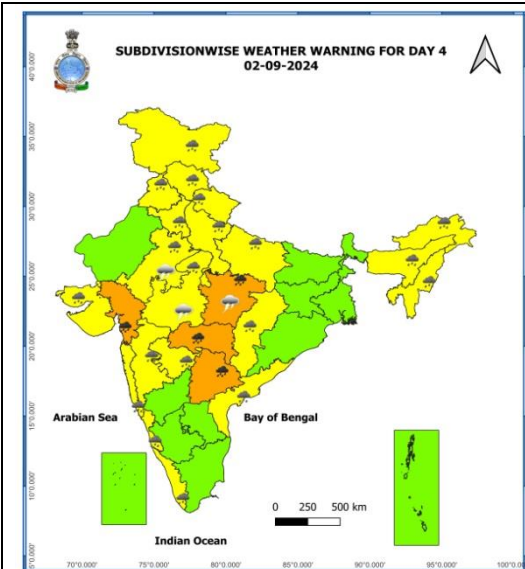
MSW (knot/kmph)	Impact	Action
28-33 (52-61)	Very rough seas	Total suspension of fishing operations
34-49 (62-91)	High to very high seas	Total suspension of fishing operations
50-63 (92-117)	Very high seas	Total suspension of fishing operations
≥ 64 (≥118)	Phenomenal	Total suspension of fishing operations

Contact: Cyclone Warning Division, Office of the Director General of Meteorology, India
 Meteorological Department, Ministry of Earth Sciences, E-mail: cyclonewarningdivision@gmail.com,
 Website: rsmcnewdelhi.imd.gov.in, Spatial rainfall distribution: Isolated: <25%, A few: 26-50%, Many:
 51-75%, Most: 76-100%, Rainfall amount (mm): Heavy rain: 64.5 – 115.5, Very heavy rain: 115.6 –
 204.4, Extremely heavy rain: 204.5 or more.

Weather Warning Graphics



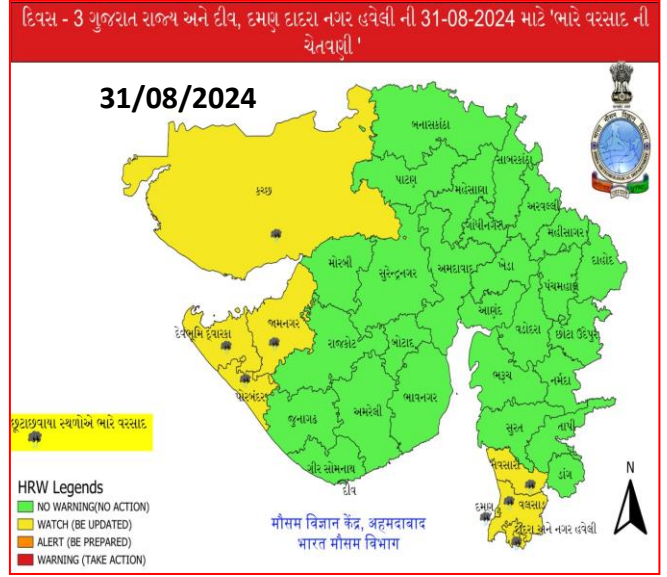
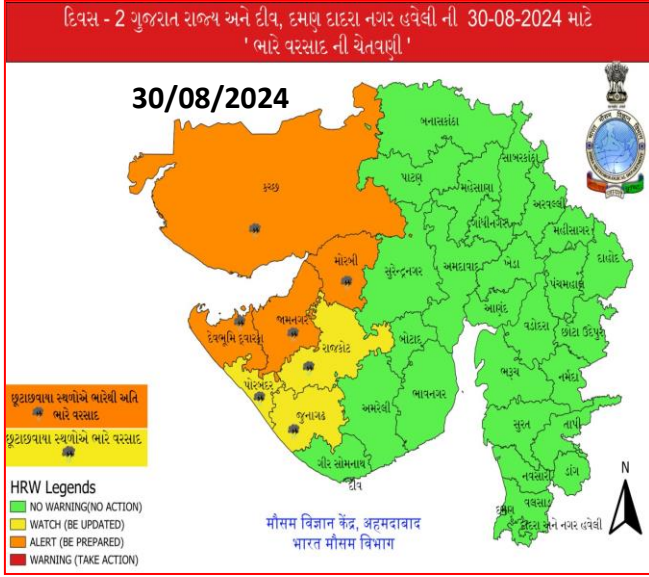
Contact: Cyclone Warning Division, Office of the Director General of Meteorology, India Meteorological Department, Ministry of Earth Sciences, E-mail: cyclonewarningdivision@gmail.com, Website: rsmcnewdelhi.imd.gov.in, Spatial rainfall distribution: Isolated: <25%, A few: 26-50%, Many: 51-75%, Most: 76-100%, Rainfall amount (mm): Heavy rain: 64.5 – 115.5, Very heavy rain: 115.6 – 204.4, Extremely heavy rain: 204.5 or more.



- Action may be taken based on **ORANGE AND RED** COLOUR warnings.
- Vulnerable regions likely urban and hilly areas action may be initiated for heavy rainfall warning.
- As the lead period increases forecast accuracy decreases.

Contact: Cyclone Warning Division, Office of the Director General of Meteorology, India
Meteorological Department, Ministry of Earth Sciences, E-mail: cyclonewarningdivision@gmail.com,
Website: rsmcnewdelhi.imd.gov.in, **Spatial rainfall distribution:** Isolated: <25%, A few: 26-50%, Many: 51-75%, Most: 76-100%, **Rainfall amount (mm):** Heavy rain: 64.5 – 115.5, Very heavy rain: 115.6 – 204.4, Extremely heavy rain: 204.5 or more.

District wise Warning Graphics Gujarat



**Contact: Cyclone Warning Division, Office of the Director General of Meteorology, India
 Meteorological Department, Ministry of Earth Sciences, E-mail: cyclonewarningdivision@gmail.com,
 Website: rsmcnewdelhi.imd.gov.in, Spatial rainfall distribution: Isolated: <25%, A few: 26-50%, Many:
 51-75%, Most: 76-100%, Rainfall amount (mm): Heavy rain: 64.5 – 115.5, Very heavy rain: 115.6 –
 204.4, Extremely heavy rain: 204.5 or more.**

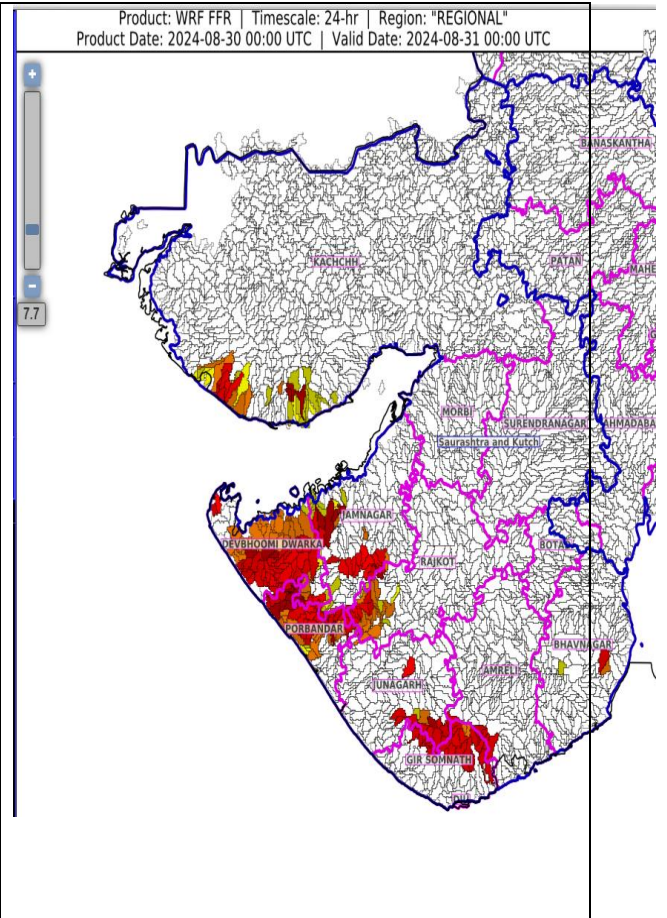
Flash Flood Guidance

24 hours Outlook for the Flash Flood Risk (FFR) till 0530 IST of 31-08-2024 :

Low to Moderate flash flood risk likely over few watersheds & neighbourhoods of following Met Sub-divisions during next 24 hours.

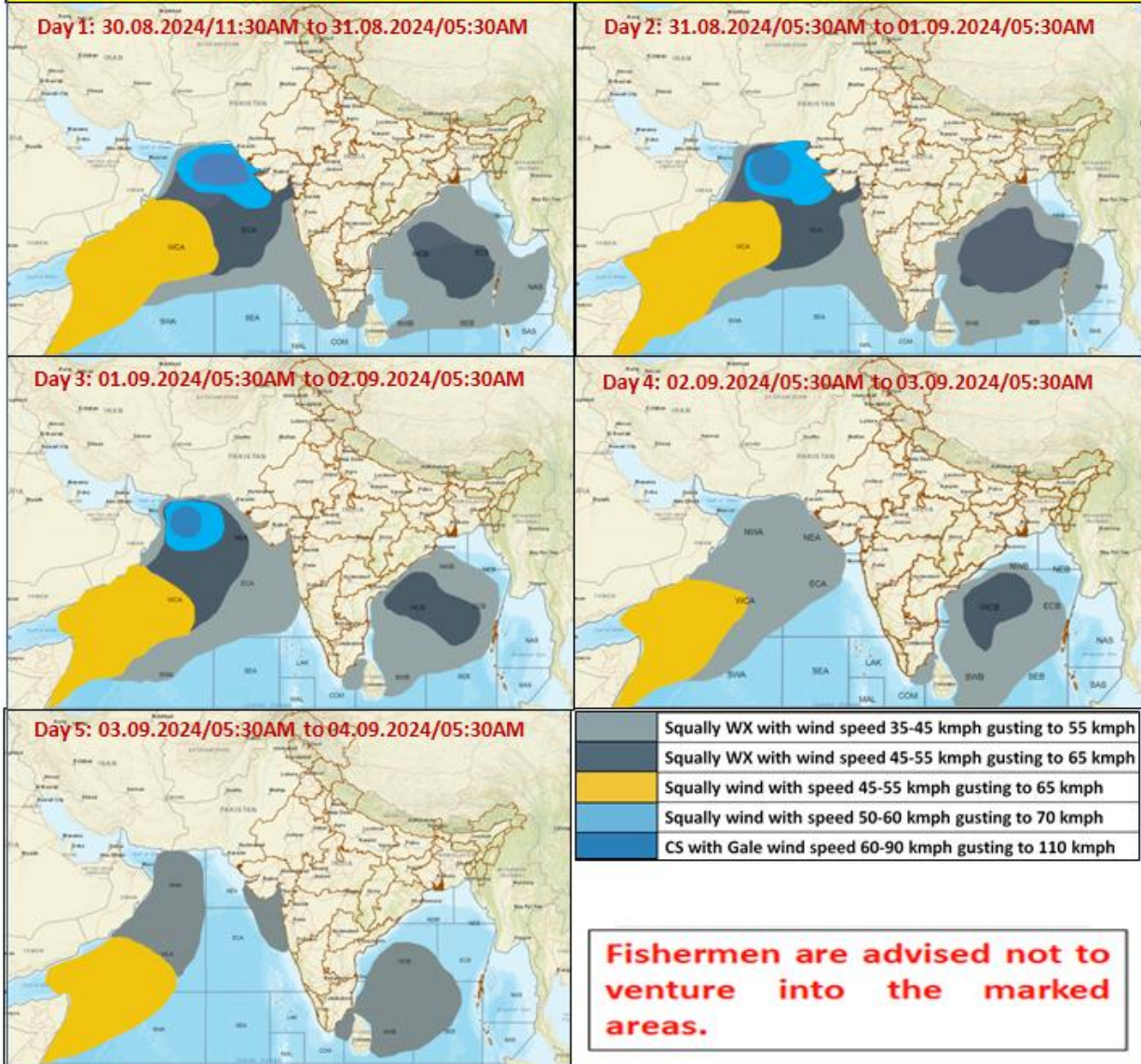
Saurashtra & Kutch - Amreli, Bhavnagar, Devbhoomi Dwarka, Gir Somnath, Jamnagar, Junagarh, Porbandar, Rajkot and Kachchh districts.

Surface runoff/ Inundation may occur at some fully saturated soils & low-lying areas over AoC as shown in map due to expected rainfall occurrence in next 24 hours.



Contact: Cyclone Warning Division, Office of the Director General of Meteorology, India
Meteorological Department, Ministry of Earth Sciences, E-mail: cyclonewarningdivision@gmail.com,
Website: rsmcnewdelhi.imd.gov.in, Spatial rainfall distribution: Isolated: <25%, A few: 26-50%, Many: 51-75%, Most: 76-100%, Rainfall amount (mm): Heavy rain: 64.5 – 115.5, Very heavy rain: 115.6 – 204.4, Extremely heavy rain: 204.5 or more.

Fishermen Warning Graphics



Contact: Cyclone Warning Division, Office of the Director General of Meteorology, India Meteorological Department, Ministry of Earth Sciences, E-mail: cyclonewarningdivision@gmail.com, Website: rsmcnewdelhi.imd.gov.in, Spatial rainfall distribution: Isolated: <25%, A few: 26-50%, Many: 51-75%, Most: 76-100%, Rainfall amount (mm): Heavy rain: 64.5 – 115.5, Very heavy rain: 115.6 – 204.4, Extremely heavy rain: 204.5 or more.

ANNEXURE –II

Significant Rainfall recorded during past 24 hours till 0830 hours IST of today 29.08.2024 (in cm):

1. Gujarat

Mandvi(Kutch) 39;Mundra (Kutch) 22; Okha (Devbhoomi Dwarka) 17; Abdasa (Kutch) 16; Naliya (Kutch) 16;Dwarka (Devbhoomi Dwarka) 8; Anjar (Kutch) 8; Gandhidham (Kutch) 7.

2. Coastal Andhra Pradesh & Yanam

Kalingapatnam (Srikakulam) 8.

Contact: Cyclone Warning Division, Office of the Director General of Meteorology, India Meteorological Department, Ministry of Earth Sciences, E-mail:cyclonewarningdivision@gmail.com, Website: rsmcnewdelhi.imd.gov.in, Spatial rainfall distribution: Isolated: <25%, A few: 26-50%, Many: 51-75%, Most: 76-100%, Rainfall amount (mm): Heavy rain: 64.5 – 115.5, Very heavy rain: 115.6 – 204.4, Extremely heavy rain: 204.5 or more.